



Hörmann KG Verkaufsgesellschaft
Doors for Home and Industry

Lisa Modest-Danke

Verena Lambers

Sophie Eiling

E-mail: pr@hoermann.com

Download texts and images:
www.hoermann.de/presse

Image 1: Insulated doors for cold rooms and freezers are a new addition to the Hörmann product range. Available as hinged or sliding doors, they are most commonly used in the food industry.

Expanded product range for function doors New from Hörmann: Insulated doors for cold rooms and freezers

Insulated doors for cold rooms and freezers play a very important role in food and retail industries. They help to keep the temperature in the rooms constant, thus ensuring the quality and shelf life of the products stored there. Hörmann has expanded its product range to include insulated hinged and sliding doors for cold rooms down to 0°C and freezer rooms down to -28°C. This means that the manufacturer can now offer even more comprehensive solutions for the food industry from a single source – all perfectly coordinated.

Insulated doors for cold rooms

The HID-80 cold room hinged door and HIS-80 cold room sliding door have been designed for applications down to 0°C. Both doors are ideal for closing off smaller cold storage facilities or larger cold stores in supermarkets, butcher's shops, the food industry or food logistics operations. They have an 80 mm thick door leaf that is foamed with polyurethane (PU). Two surface finish variants are available: stainless steel (matt circular textured finish or polished finish) and coated steel (RAL 9002, optionally in RAL to choose).

Thanks to the maximum degree of prefabrication, the doors with the insulating Thermo block frame can be installed quickly and easily. Since the doors are fitted in front of the wall opening, fitting is possible in all construction situations.

Specially designed seals minimise energy loss. The maximum dimensions of the hinged door are 1230 x 2300 mm (larger dimensions are available on request), while the maximum dimensions of the manually operated sliding door are 4000 x 2800 mm. It is available with a bottom guide or wall guide, with an optional locking mechanism.

Insulated doors for freezers

The new HID-120 freezer hinged door and HIS-120 freezer sliding door are suitable for freezers with temperatures down to -28°C. Both provide reliable insulation thanks to their 120 mm thick PU-foamed door leaf and completely prevent the exchange of air when the door is closed. The Thermo block frame, which is prepared at the factory, keeps fitting time to a minimum. The integrated, self-regulating frame heating prevents the sealing from freezing while minimising energy consumption. A locking mechanism is also optionally available. The HID-120 hinged door is available in a maximum size of 1230 mm x 2300 mm (larger dimensions are available on request), while the HIS-120 sliding door comes in a maximum size of 4000 mm x 2800 mm. The sliding door is manually operated and can be equipped with a bottom guide or wall guide.

The insulated sliding doors are ideal in combination with Hörmann PE double-action doors: Whilst the insulated sliding door is open when frozen goods are being retrieved or stored, the double-action door keeps the cold air in the freezer. This reduces energy consumption and increases efficiency.

The doors can also be combined with the F 4010 Cold high-speed folding door. This flexible door has a triple-insulated curtain and an opening speed of 1 m/s to ensure a fast flow of traffic. As a result, cold losses in deep freeze areas are reduced during daily operations when the insulated sliding door is open and the deep freeze door is in use. In addition, the sliding door is closed at night to achieve optimal insulation.

Hörmann KG Verkaufsgesellschaft
Doors for Home and Industry

Lisa Modest-Danke

Verena Lambers

Sophie Eiling

E-mail: pr@hoermann.com

Download texts and images:
www.hoermann.de/presse

(3239 characters incl. spaces)

Images and captions:

Hörmann KG Verkaufsgesellschaft
Doors for Home and Industry

Lisa Modest-Danke

Verena Lambers

Sophie Eiling

E-mail: pr@hoermann.com

Download texts and images:
www.hoermann.de/presse

Image 2: The hinged doors for cold rooms and freezers are available in a maximum size of 1230 × 2300 mm. They are delivered with a maximum degree of prefabrication and can be quickly and easily fitted with a Thermo block frame.

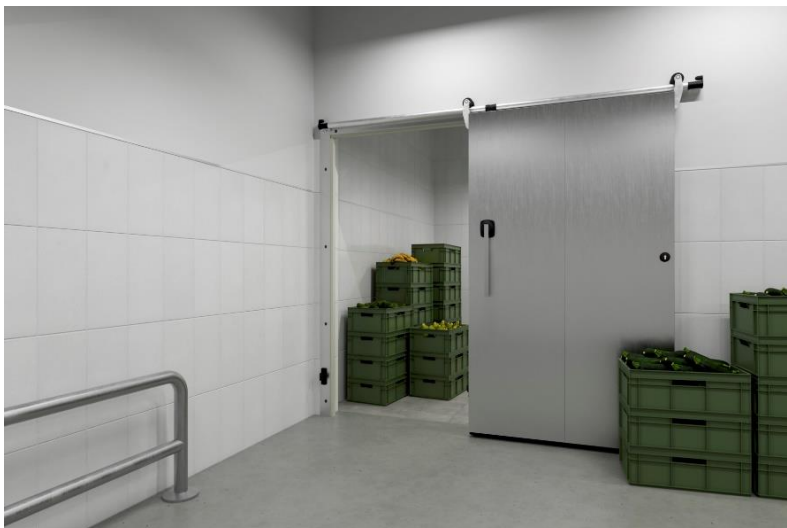


Image 3: The insulated sliding doors from Hörmann are designed with extra-large rollers for easy handling with little actuation force.



Hörmann KG Verkaufsgesellschaft
Doors for Home and Industry

Lisa Modest-Danke

Verena Lambers

Sophie Eiling

E-mail: pr@hoermann.com

Download texts and images:
www.hoermann.de/presse

Image 4: The sliding doors can be combined with PE double-action doors from Hörmann. Whilst the sliding door is open when goods are being retrieved or stored, the double-action door keeps the cold air in the cold room or freezer, reducing energy consumption.

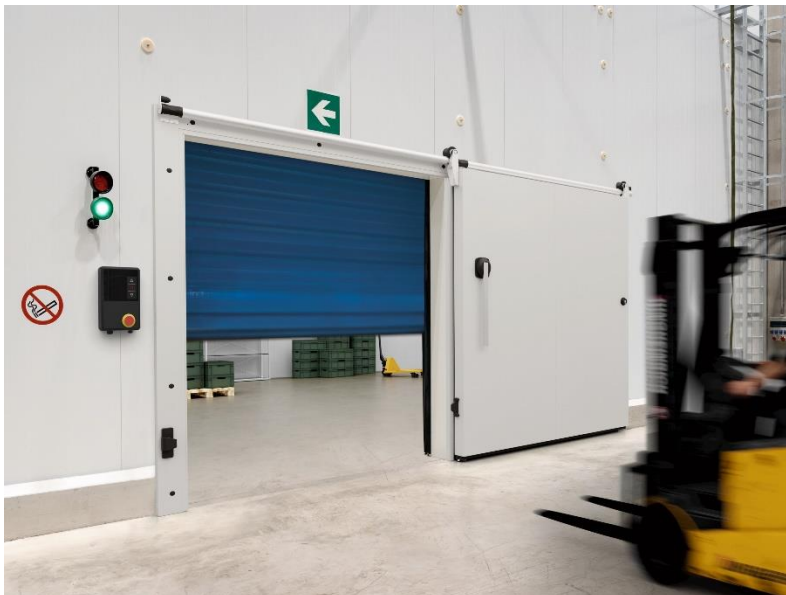


Image 5: Two solutions from a single source for deep freeze logistics: Hörmann F 4010 Cold high-speed folding doors and insulated sliding doors are the ideal combination for optimised and efficient operations.

Photos: Hörmann